

EQUATORIAL

PRESS RELEASE

**EMBARGOED UNTIL 16 July 2025, 9AM MYT (Malaysian Time)
FOR IMMEDIATE DISTRIBUTION**

A LEGACY OF HERITAGE WITH EQ'S SIGNATURE ART COLLECTION

KUALA LUMPUR, Malaysia, 16 July 2025 – EQ is delighted to present a curated collection of timeless art pieces that celebrate both heritage and contemporary elegance. Formerly known as Hotel Equatorial Kuala Lumpur, the hotel has undergone a remarkable rebranding, blending its rich cultural legacy with modern sophistication. The transformation positions the hotel as a premier destination for discerning travellers seeking exceptional hospitality in the vibrant heart of the city.

EQ's art collection reflects a deep commitment to legacy and continuity, exemplified by the restored masterpiece, *Malaysian Life* by Yan Sook Leong. Depicting elements of Malaysian culture, including wayang kulit, Kelantanese kite-flying, and traditional Chinese dance, the artwork from Yan portrays scenes of village life and agricultural practices — showcasing Malaysia's journey of growth and industrialisation. Originally commissioned in 1974 for the Hotel Equatorial Kuala Lumpur, this magnificent copper tooling piece graced the hotel's main reception area for nearly four decades. Following the property's transformation into Equatorial Plaza and EQ, the artwork was rightfully restored to its place in the hotel lobby, serving as a bridge between generations and carrying the spirit of the former hotel into the refined atmosphere of EQ.

This dedication to preserving heritage is championed by the Chief Executive Officer of Equatorial Group, Donald Lim, whose deep appreciation for artistry stems from his belief that art is a powerful medium connecting history, culture, innovation, and fostering dialogue. He explains, "Art is the soul of a space. At EQ, every piece we display carries a story, a legacy, and a purpose. It reflects where we come from, where we're going, and we hope our guests feel a sense of discovery and belonging."

Continuing the artistic exploration beyond the lobby, Malaysian street artist Kenji Chai presents *The Rise of the Phoenix*, a vibrant and bold addition to the hotel's collection. Chai's work, known for his signature character, Chaigo, and his dynamic murals worldwide, embodies themes of resilience, identity, and transformation—values deeply resonating with the hotel's story. Given creative freedom, Chai chose to honour EQ's transformation with a phoenix, symbolising renewal and strength, using 72 plates repurposed from the former hotel. Now displayed at Étoile, the creation invites guests to connect with a historical narrative and embrace the future.

CORPORATE OFFICE

MENARA GENERALI #28-01, 27 JALAN SULTAN ISMAIL
50250 KUALA LUMPUR, MALAYSIA
T 60 3 2031 1133 / E INFO@EQUATORIAL.COM
EQUATORIAL.COM

HOTEL EQUATORIAL MANAGEMENT SDN BHD / 197901007038 (51324-T)

EQUATORIAL

At the Porte-Cochère of Equatorial Plaza, EQ's dedication to sustainability and cultural preservation is further showcased in *Miza, Kika and Iwa* and *Sorok-Sorok*, both crafted by award-winning sculptor Nizam Abdullah in 2019. *Miza, Kika and Iwa* represents the timeless wisdom of "see no evil, hear no evil, speak no evil," inspired by the legendary 17th-century Japanese carving of the Three Wise Monkeys, while *Sorok-Sorok* depicts the joy and unity of Malaysia's multi-ethnic society through the nostalgic game of hide and seek. Nizam Abdullah's innovative use of bronze salvaged from the former Hotel Equatorial Kuala Lumpur reinforces EQ's commitment to preserving history through art, reflecting the hotel's mission to merge legacy with innovation.

The Striding Man installations are located in major cities around the world and one can now be admired in Kuala Lumpur. Originally created for Robb Report Malaysia and Johnnie Walker Blue Label, the artwork uses the iconic figure as a canvas to reflect the personal transformation of Mark Lee, a Malaysian contemporary artist. Lee's abstract expressionist approach is evident in the artwork's textured jacket, epitomising imprints of the past, and the dynamic ink drips on the pants, representing the movement of the present. The vibrant spaces between the colours, infused with a dominant blue hue, express the artist's enduring hope for the future, reflecting his personal journey of overcoming professional and personal crises through art. Displayed at Sky51, The Striding Man installation, named *Luxury in Sustainability*, invites guests to contemplate the intersection of artistic expression, personal resilience, and the pursuit of a more sustainable future.

In addition to the highlighted pieces, EQ showcases other significant artworks. These include *Beauty in Strength*, *Emerging Forms in Ambiguous Territory*, *Luxury in Sustainability*, and *Siri Tari* by Malaysian artists. Complementing these are *Rehearsal*, *Flying Coffeeshop*, *Nicko*, and *700 Foot Ceiling* by international artists from Japan, Indonesia, France, Canada, and Italy.

EQ's art collection offers a unique and accessible way to discover the hotel, fostering an inviting atmosphere where guests can freely appreciate the artworks, reflecting our commitment to creating a welcoming and engaging experience.

~ End ~

EQUATORIAL

About EQ

EQ, an integral part of the Hotel Equatorial legacy, celebrates its fifth decade in hospitality. It holds the title of Malaysia's #1 City Hotel in the Travel + Leisure Luxury Awards Asia Pacific (2022-2025), #2 City Hotel in Asia and #22 among the world's top 100 hotels by Travel + Leisure World's Best Awards 2025, and has been Kuala Lumpur's top-rated hotel on TripAdvisor since 2019.

Occupying the upper floors of the award-winning 52-storey Equatorial Plaza, the hotel boasts 440 stylish rooms, state-of-the-art banquet and meeting facilities, and an array of award-winning signature restaurants and bars. Highlights include the lounge - Bottega, all-day dining at Nipah, the Kampachi Japanese restaurant, and the impressive Sky51, which features Sabayon with its contemporary European cuisine and Blue, a stylish bar with panoramic city views. This five-star property is Green Building Index (GBI) Gold-certified, placing it among Malaysia's most energy-efficient and sustainable buildings. Additional facilities encompass the exclusive Sanctum wellness and spa, a 25-metre infinity pool, a Vitality Jacuzzi®, and a cutting-edge fitness centre.

For further information and enquiries, kindly contact:

Rafina A. Rahman

Group Marketing & Communications Manager

Hotel Equatorial Group

Menara Generali #28-01. 27 Jalan Sultan Ismail, 50250 Kuala Lumpur

DID Tel: +603 2275 7877 Mobile: +6012 287 6525

rafina@hec.equatorial.com

Yu Jia Joe

Senior Marketing Executive

Hotel Equatorial Group

Menara Generali #28-01. 27 Jalan Sultan Ismail, 50250 Kuala Lumpur

DID Tel: +603 2275 7883 Mobile: +6017 779 6717

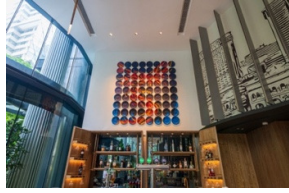
jjajoeyu@hec.equatorial.com

Website: equatorial.com

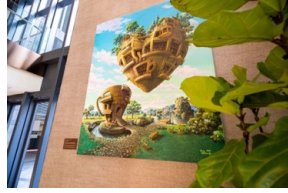
Images enclosed can be accessed through the link:

<https://drive.google.com/drive/folders/1YL18wHt9hcFc0SPeP2gal7o6g6wze9e3?usp=sharing>

EQUATORIAL



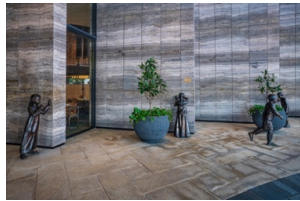
1) *The Rise of the Phoenix*
Kenji Chai



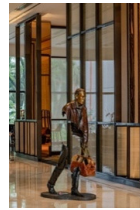
2) *Flying Coffeeshop*
Nanang Warsito



3) *Miza, Kika and Iwa*
Nizam Abdullah



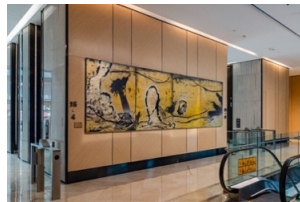
4) *Sorok-sorok*
Nizam Abdullah



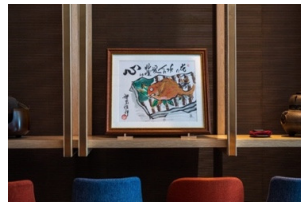
5) *Nicko*
Bruno Catalano



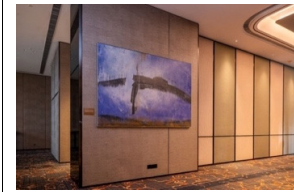
6) *Malaysian Life*
Yan Sook Leong



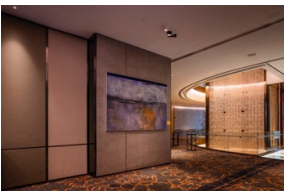
7) *Emerging Forms in Ambiguous Territory*
Wong Peng Fey



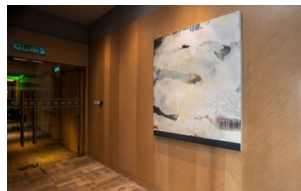
8) *Kandagawa*
Japanese Artist



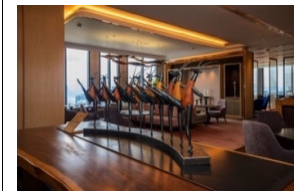
9) *700 Foot Ceiling*
Drew Harris



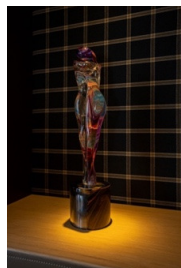
10) *Even at this time, we must maintain our commitment*
Drew Harris



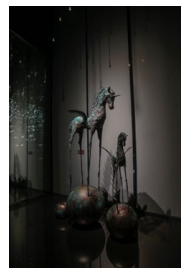
11) *A Softer, Gentler Way*
Drew Harris



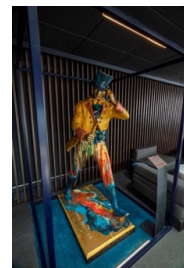
12) *Rehearsal*
Masafumi Sawada



13) *Lovers*
Andrea Tagliapietra



14) *Beauty in Strength*
Suhaidi Razi



15) *Luxury in Sustainability*
Mark Lee